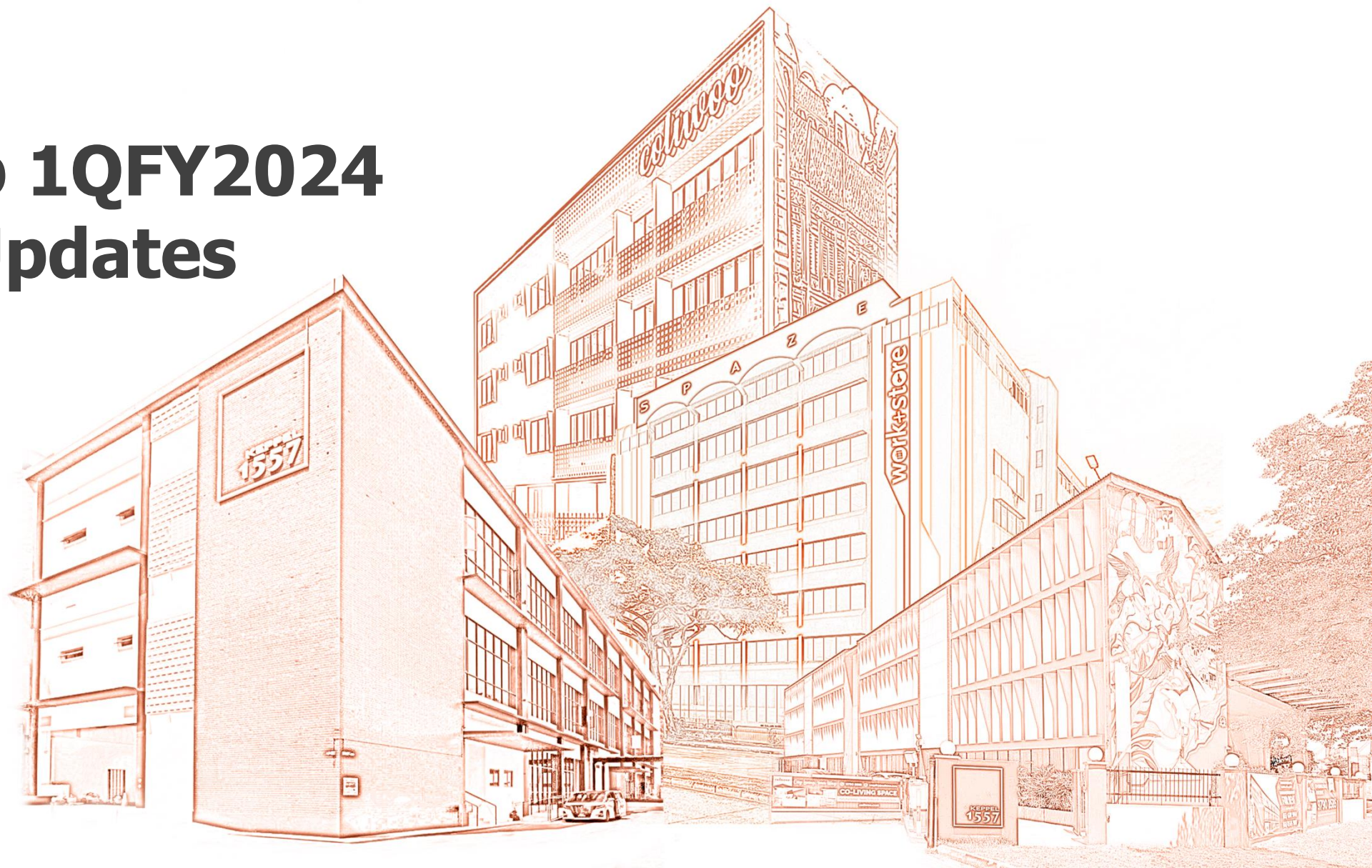


**LHN
GROUP**
SPACE OPTIMISED

LHN Group 1QFY2024 Business Updates

MAR 2024



Disclaimer

This presentation should be read in conjunction with the annual report of LHN Limited (the “Company”) as announced on 7 January 2024 for the full year ended 30 September 2023.

This presentation does not constitute or form part of any offer or invitation to sell or issue, or any solicitation of any offer to purchase or subscribe for, any securities or an inducement to enter into any investment activity, nor shall any part or all of this presentation form the basis of, or be relied on in connection with, any contract or investment decision in relation to any securities.

Neither the Company nor any of its employees or representatives are to have any liability whatsoever (including in negligence or otherwise) for any loss, howsoever arising, whether directly or indirectly, from any use, reliance or distribution of this presentation or its contents or otherwise arising in connection with this presentation, including such loss as may arise from any statement, opinion, information or matter (express or implied) arising out of, contained in or derived from or any omission from the summary of information presented herein.

It is not the intention to provide, and you may not rely on this presentation as providing a fair, accurate, complete or comprehensive analysis of all material information concerning the Company. The information and opinions, if any, contained in this presentation are provided as of the date of this presentation and are subject to change without notice. The information contained in this presentation has not been independently verified. No representation or warranty expressed or implied is made as to, and no reliance should be placed on, the accuracy, completeness, correctness or fairness of the information and opinions, if any, contained in this presentation.

This presentation may contain forward-looking statements that involve assumptions, risks and uncertainties. Actual future performance, outcomes and results may differ materially from those expressed in any forward-looking statements arising from risks, uncertainties and assumptions. You are cautioned not to rely on these forward-looking statements, if any, based on current views on future events.

The past performance of the Company is not indicative of the future performance of the Company. An investment in shares or securities in the Company is subject to investment risks, including the possible loss of the principal amount invested.

Information disclosed in this presentation is derived from the publication of the Company, including announcements, interim reports, annual reports and circulars. Please refer to these documents, available on the Company's website at lhngroup.com, the SGX-ST website at sgx.com and The Stock Exchange of Hong Kong Limited website at www.hkexnews.hk, for detailed information.

If you are in any doubt about the action you should take, consult your legal, financial, tax or other professional adviser(s).



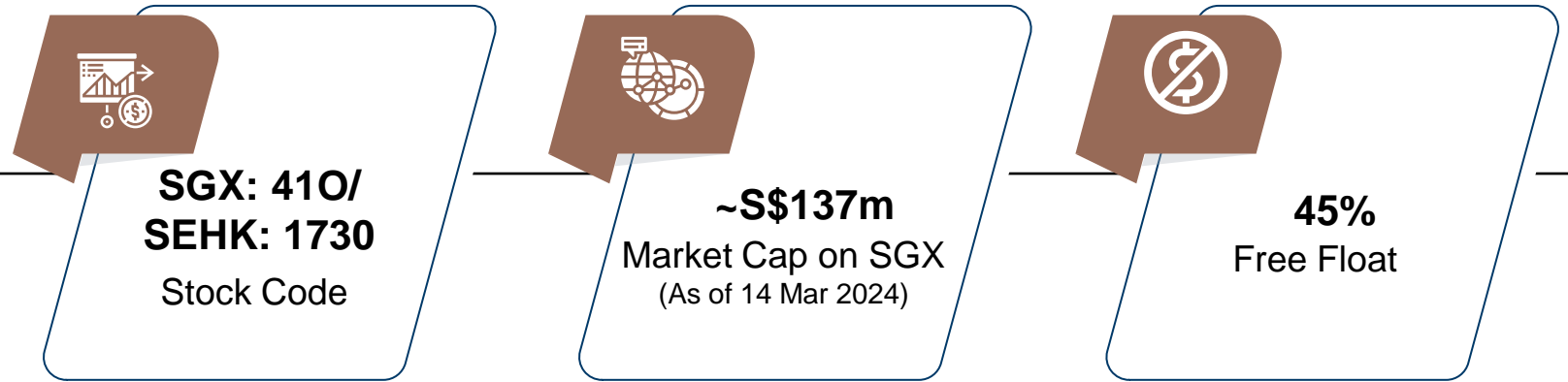
Table of Content

- 1 Corporate Overview
- 2 1QFY2024 Business Update
- 3 FY2024 Business Outlook

Corporate Overview



Real estate management services company providing integrated real estate management services across Asia.



Shareholders



* Approximate figures

OUR CURRENT BUSINESSES

SPACE OPTIMISATION

PROPERTY DEVELOPMENT

What We Do

Redesign unused, old and under-utilised commercial, industrial and residential spaces to maximise their leasable area and create productive environments for our space users.

Engage in property development activities such as the acquisition, development and/or sale of various types of properties and property investment activities.

Subsidiaries / Space Concepts

COMMERCIAL SPACE

GREENHUB
SUITED OFFICES FOR BORN GLOBAL FIRMS

INDUSTRIAL SPACE

work+store

RESIDENTIAL SPACE

colivoo **85 SOHO**

55 TUAS PROJECT - FOOD FACTORY

Where We Operate



Singapore



Indonesia



Myanmar



Cambodia



China



Singapore

OUR CURRENT BUSINESSES

FACILITIES MANAGEMENT

ENERGY RESOURCES

What We Do

Provide a full spectrum of integrated facilities management services and car park management services to our clients.

Provide efficient and innovative renewable energy and expertise for our clients.

Subsidiaries

**CLEANING &
RELATED SERVICES**



**CAR PARK
MANAGEMENT**



**RENEWABLE ENERGY
(SOLAR PANELS,
EV CHARGING STATIONS,
ELECTRICITY RETAILING)**



Where We Operate



Singapore



Hong Kong SAR
(China)



Singapore

**LHN
GROUP**
SPACE OPTIMISED

1QFY2024 Business Update



MAINTAINING ROBUST MOMENTUM IN OUR CORE BUSINESS SEGMENTS

Overall Occupancy Rates

Residential, Industrial and Commercial Properties

over **90%**



Coliwoo Business

Managing

2,153
keys



Facilities Management Business

Secured

24
new FM contracts



Car Park Management

Managing **80 car parks** with

over **26,000**

lots in Singapore



Managing **2 car parks** with

over **800**

lots in Hong Kong

Energy

Secured **7** solar energy contracts with combined capacity of

approx.

1.7 MW



Energy

Operating

17
EV charger points

under the Group and its joint venture.



SPACE OPTIMISATION

16 Owned Properties

5 Joint Venture Properties

21 Master Leased Properties

COMMERCIAL



- Manage a diversified portfolio of commercial spaces consisting of offices, serviced offices, sports & recreation centres, lifestyle hubs and food & beverages establishments.
- 5** properties in Singapore.
- 1** property in Indonesia.
- Approx. 359,000 sqft of space managed.



- 2** offices worldwide.

INDUSTRIAL



- Manage B1 and B2 business spaces, including self storage spaces, supporting companies engaging in light to medium industrial and e-commerce activities.
- 15** properties in Singapore
- Approx. 2,046,000 sqft of space managed.

work+store

- 7** Self Storage facilities in Singapore with over 1,300 storage units.

RESIDENTIAL



- Manage co-living white collar & student hostels, hotels, serviced apartments.
- Manage over 2,000 keys.

colivoo

- 19** locations in Singapore

85 SOHO

- 4** locations in Myanmar, Cambodia and China.



19 Locations Islandwide in Singapore

Self-operated under Coliwoo

Sub-lease to operator



31 Boon Lay Dr.



1A Lutheran Rd.



471 Balestier Rd.



320 Balestier Rd.



Lavender Collection



115 Geylang Rd.



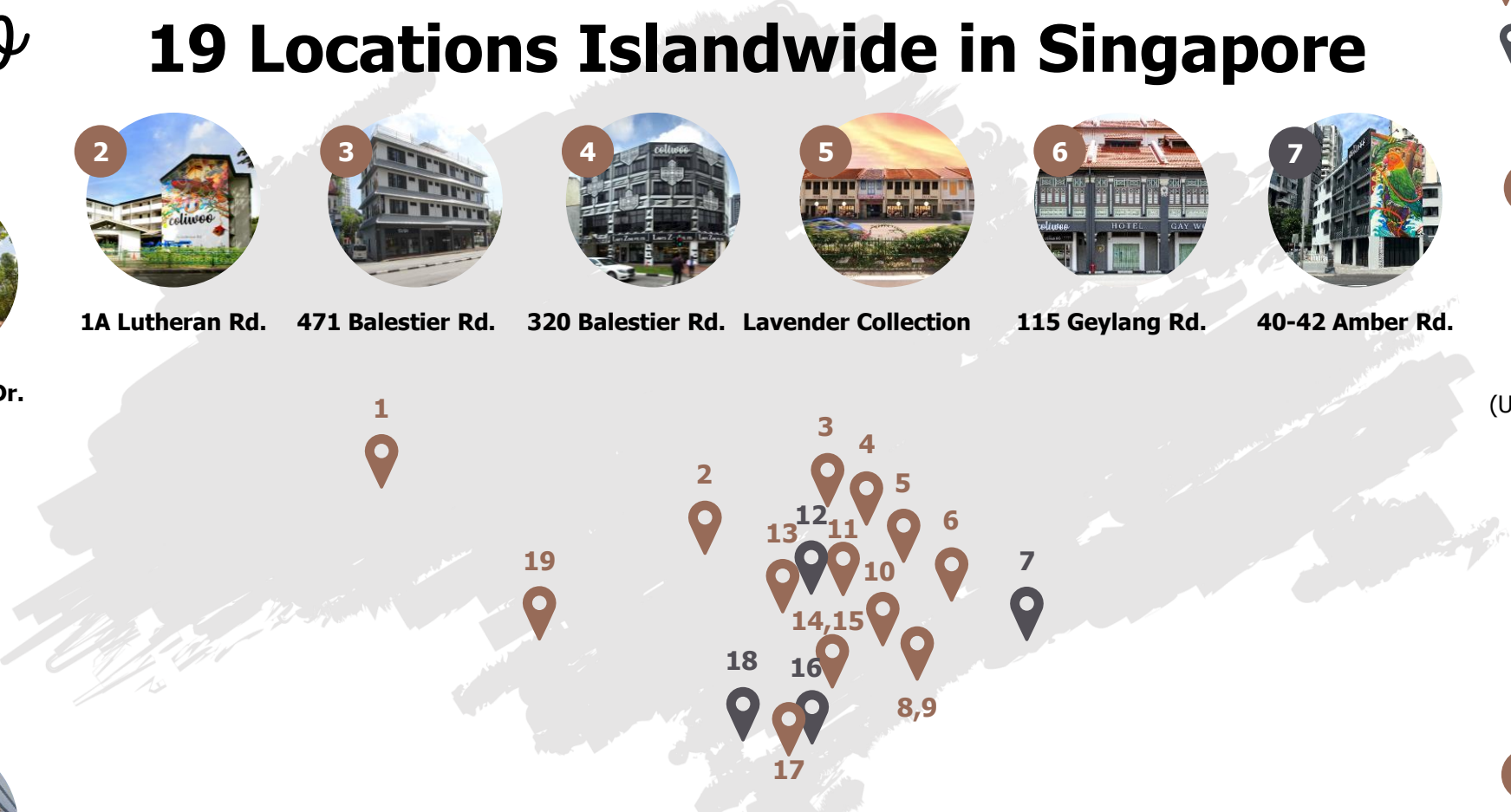
40-42 Amber Rd.



48 & 50 Arab Street
(Upcoming, estimated 2HFY24)



404 Pasir Panjang



75 Beach Rd.



10 Raeburn Park



1557 Keppel Rd.



150 Cantonment Rd.



288 River Valley Rd.
(Upcoming, estimated 4QFY24)



298 River Valley Rd.



2 Mount Elizabeth



99 Rangoon Rd.



450 & 452 Serangoon Rd.

NUMBER OF KEYS BY PROJECTS

Period	Co-Living – Singapore Projects		85 SOHO – Overseas Projects		Total
	Master Lease	Owned/Joint Venture	Master Lease	Owned/Joint Venture	
As at Sep'23	1,387	294	275	108	2,064
As at Dec'23	1,408	362	275	108	2,153

Our Growth Strategies:

- Target to add at least 800 keys every year for 3 years.
- Exploring capital recycling and move towards asset-light (AUM) model.

**LHN
GROUP**
SPACE OPTIMISED

Business Outlook & Growth Strategies



NEW FY2024 PROJECTS IN OPERATION

404 PASIR PANJANG

No. of keys:
60

Commercial Area:
approx. 2,800 sqft

Usages:
L1 - F&B
L2-4 - Guest House

Operational Date:
1QFY2024



99 Rangoon Road

No. of keys:
32

Commercial Area:
approx. 1,100 sqft

Usages:
L1 - Shop
L2-4 - Student Hostel

Operational :
Master lease to
operator



PROJECTS IN PIPELINE

288 River Valley

No. of keys:
Estimated 39

Commercial Area:
approx. 2,500 sqft

Usages:
L1 - Shop
L2-4 - Serviced
Apartment

**Expected
Operational Date:**
4QFY2024



48 & 50 ARAB STREET

No. of keys:
Estimated 26

Commercial Area:
approx. 1,345.5 sqft

Usages:
L1 - Shop/F&B
L2-4 - Hotel

**Expected
Operational Date:**
2HFY2024



PROJECTS IN PIPELINE

GSM BUILDING

No. of keys:
Estimated 187

Commercial Area:
approx. 12,000 sqft

Usages:
L1-2 - Shops
L3-6 - Serviced
Apartment

Obtained the Order
for the sale of the
property on 9 Feb
2024.



Our Advantage: Property Rejuvenation

BEFORE



AFTER



404 Pasir Panjang

BEFORE



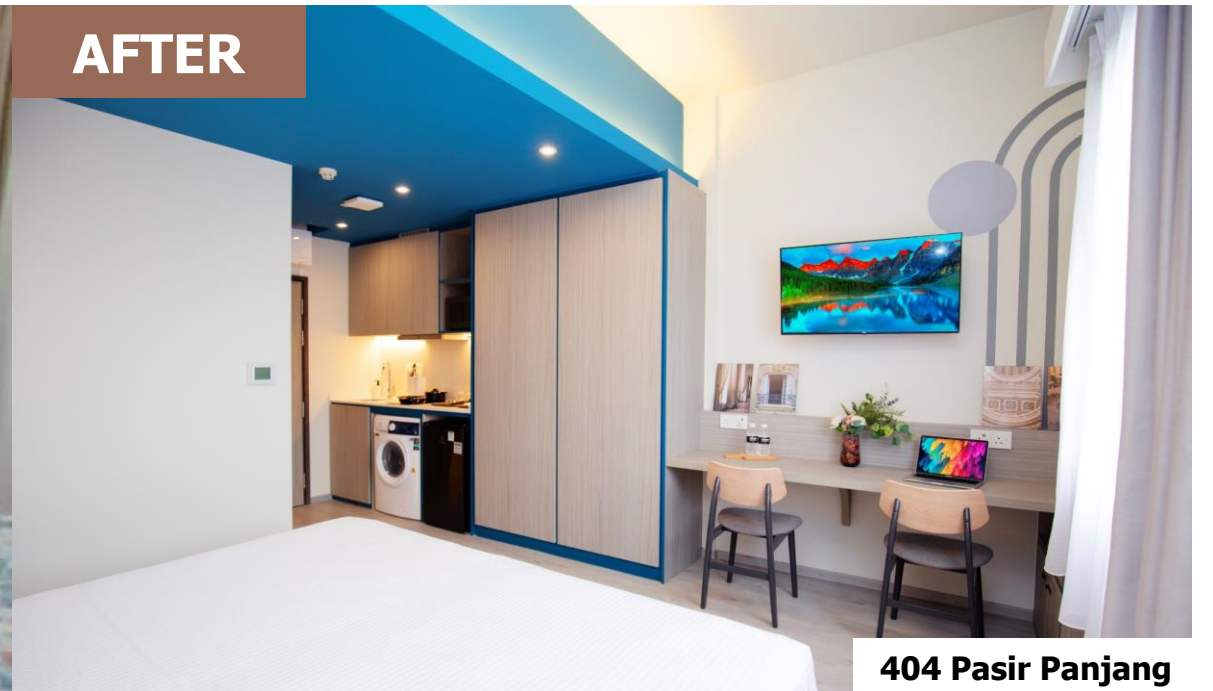
AFTER



BEFORE



AFTER



404 Pasir Panjang

SPACE OPTIMISATION

SUCCESSFULLY SECURED CONTRACT WITH MOH HOLDINGS (MoHH)

- On 25 January 2024, the Group signed a contract with MoHH to design, retrofit and operate two lodging facilities for healthcare professionals.
- Located at 100 Ulu Pandan Road and 60 Boundary Close, the facilities will provide accommodation for around 700 healthcare professionals.
- The facilities are expected to begin operations in the second half of 2024.



100 Ulu Pandan



60 Boundary Close

Q&A



LHN GROUP

SPACE OPTIMISED

E: enquiry@lhngroup.com.sg
lhngroup.com

THANK YOU



Subscribe our email alerts